



Challenges and way forward in implementing eco-efficiency at the city level

- *How to quantify citywide greenhouse gas emissions based on the consumption approach?*

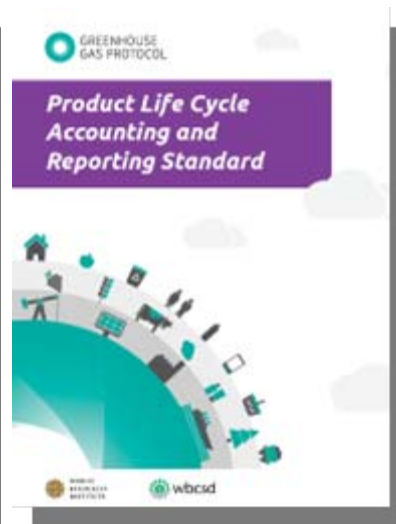
October 17-18, 2011

Suwon, Republic of Korea

Wee Kean Fong, PhD

Senior Associate, GHG Protocol China





How to quantify?

- Citywide GHG emissions

e.g. BOD, CO₂, energy, water...

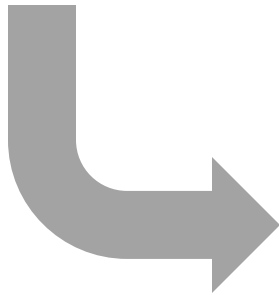
Environmental Cost

Eco-efficiency =

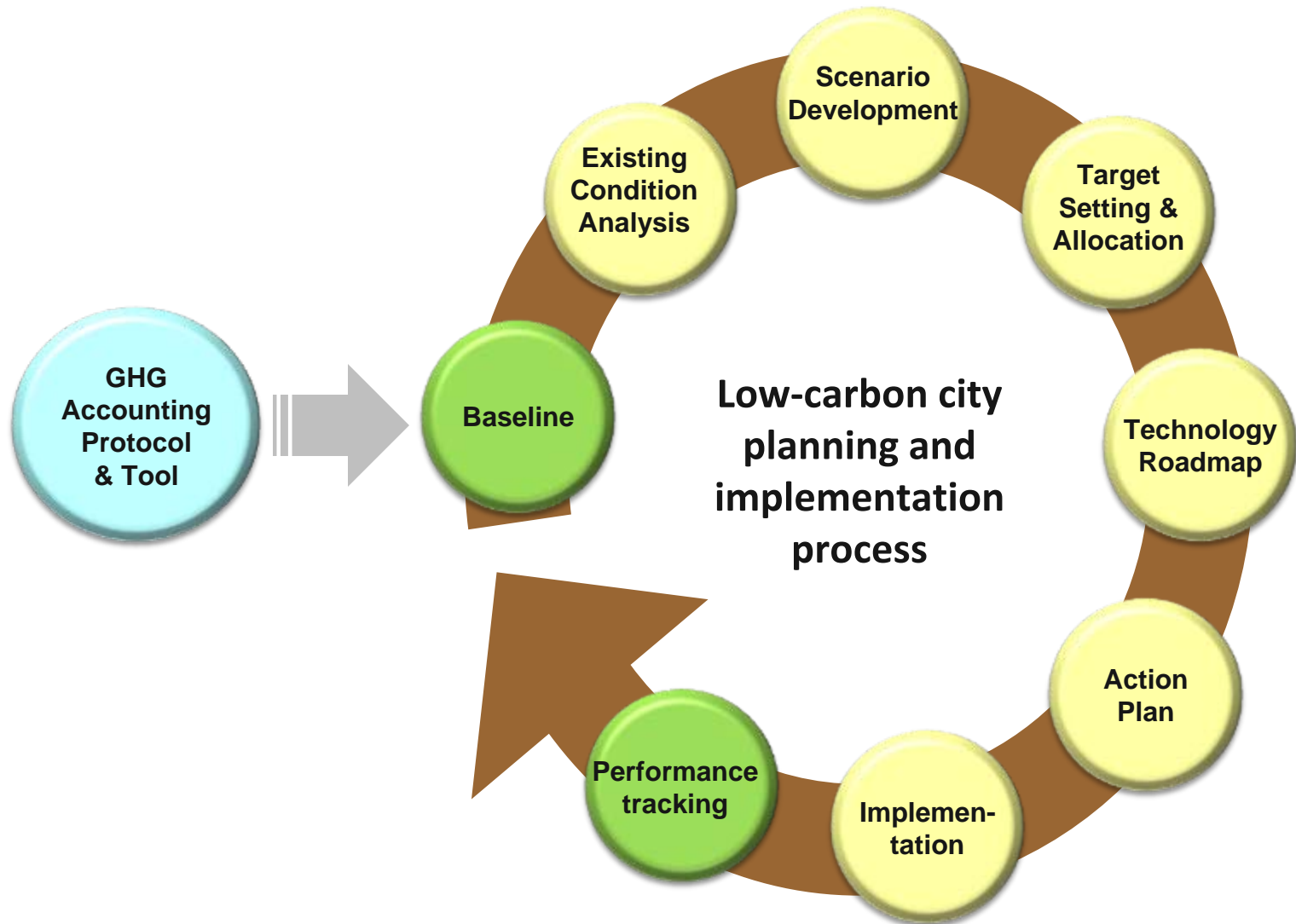
Economic Output

e.g. GDP, km, m²...

*You Can't Manage
What You Can't
Measure*



- ❖ *Establishing baseline emissions*
- ❖ *Determining current emissions (update)*
- ❖ *Setting reduction targets*
- ❖ *Identifying sources of emissions*
- ❖ *Developing reduction strategies*





Existing guidelines/standards

Standard/Protocol

Tools

Int'l Standard for Determining GHG Emissions for Cities, UNEP *et al.*

2010

Int'l Local Gov't GHG Emissions Analysis Protocol, ICLEI

Project 2 Degrees - C40

The CO2 Calculator - Denmark

2005

Bilan Carbone - France

ECO2Region - Switzerland, Germany, Italy

CO2 Grobbilanz & EMSIG - Austria

2000

GRIP - UK



Issues & challenges

- ❖ *Focus only on direct emissions*
- ❖ *Mixing up direct and indirect emissions*
- ❖ *Indirect emissions/impacts in other cities?*
- ❖ *Emission leakages?*
- ❖ *Global reductions?*
- ❖ *Recognizing the effort changing lifestyle and consumption pattern to reduce emissions?*





Solution



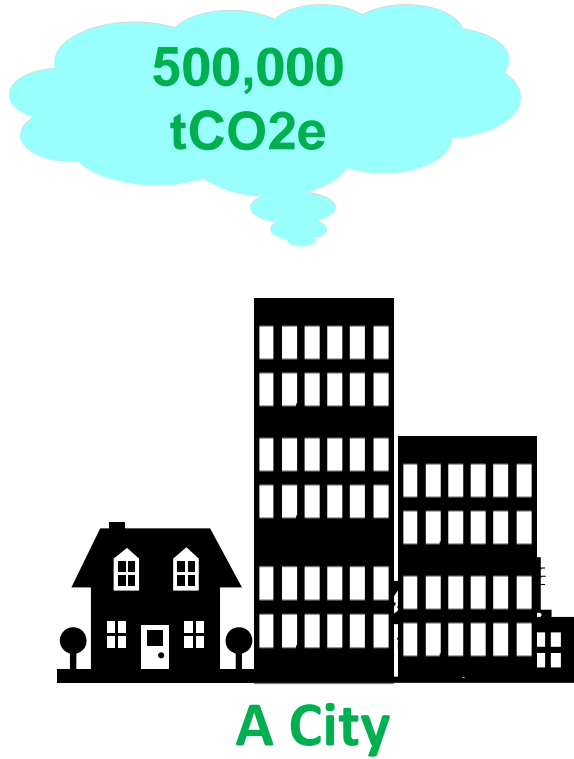
Production-based emissions



Consumption-based emissions

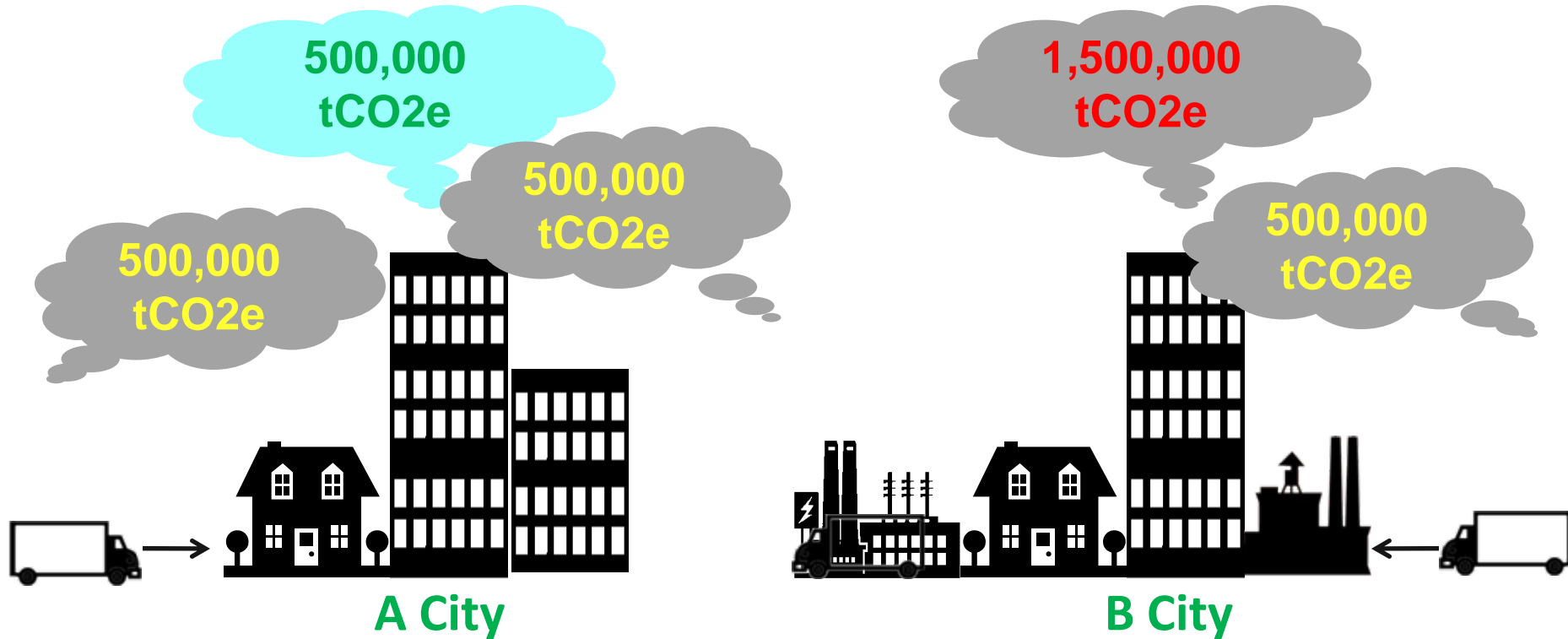


Production-based GHG accounting





Consumption-based GHG accounting

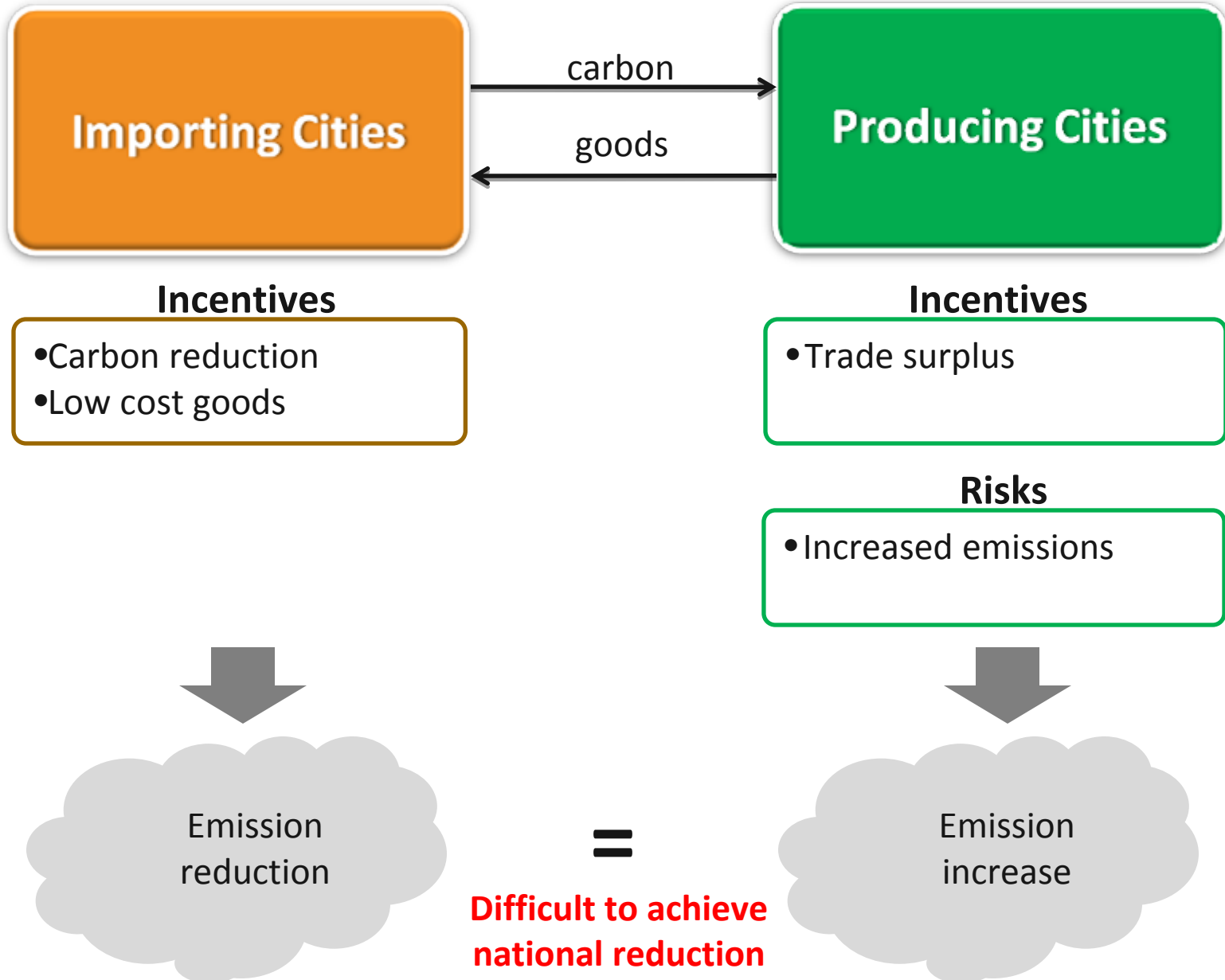


Direct emissions = 500,000 tCO₂e
Indirect emissions = 1,000,000 tCO₂e

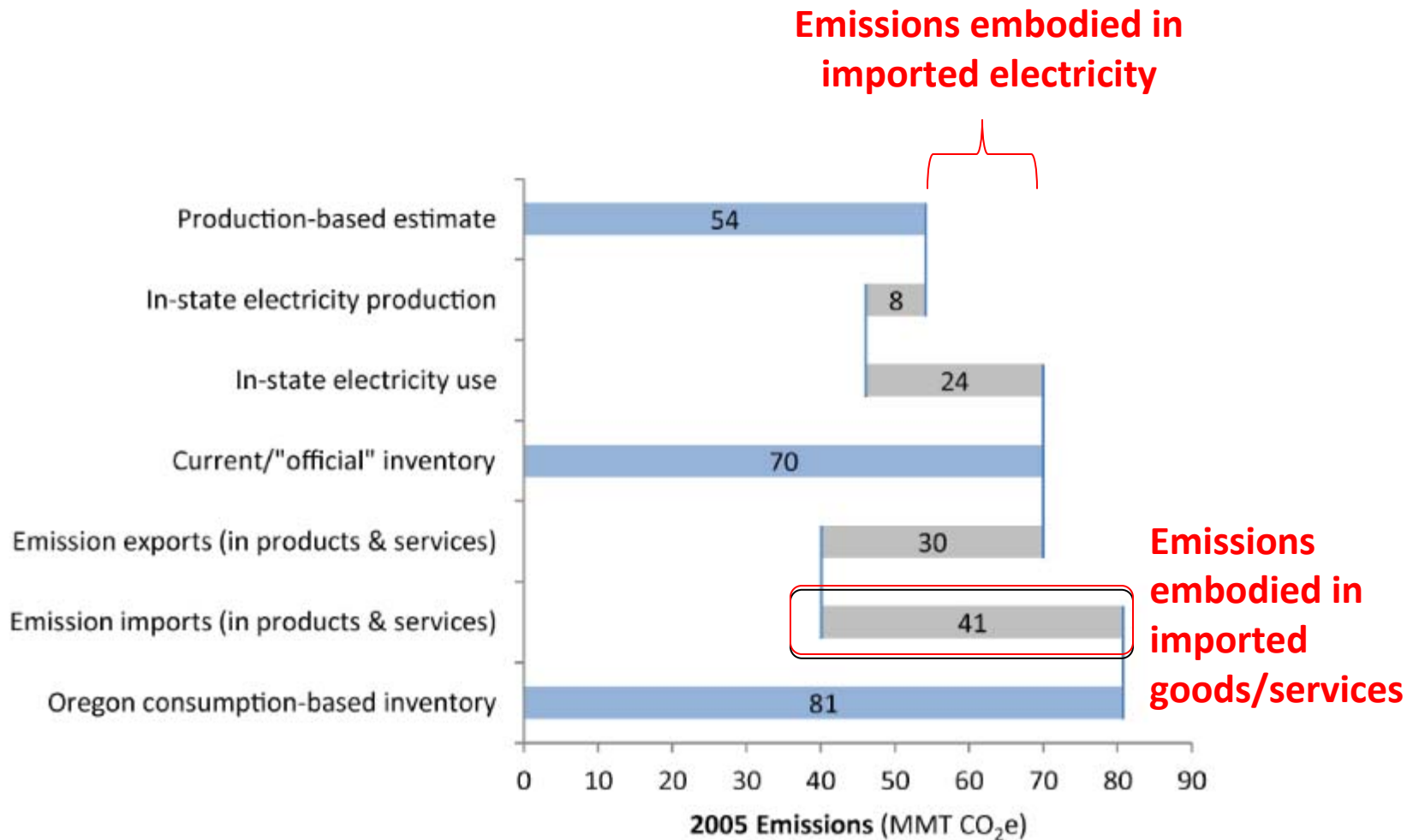
Direct emissions = 1,500,000 tCO₂e
Indirect emissions = 500,000 tCO₂e



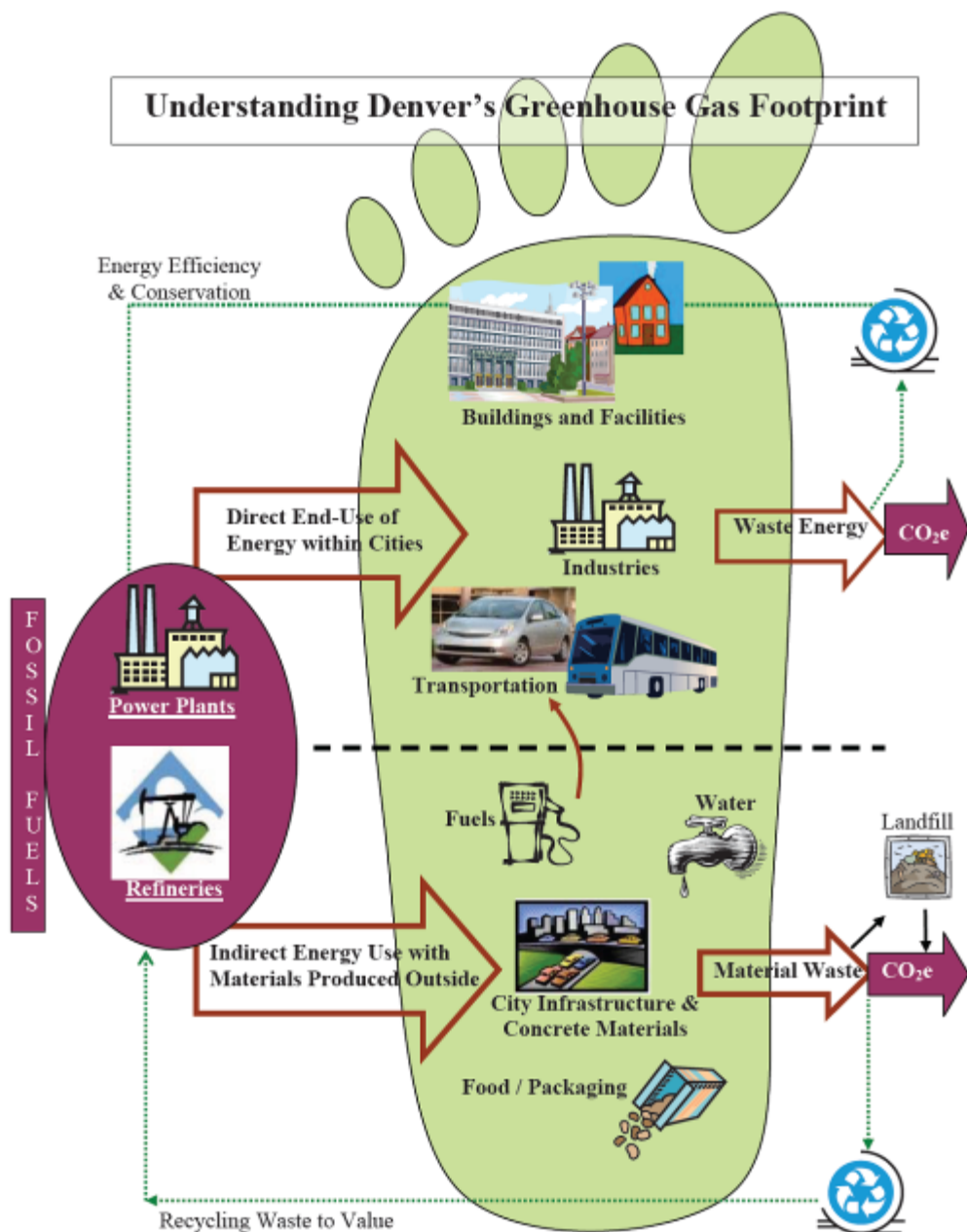
Emission Leakages



Example 1: Oregon State, USA



Example 2: Denver, CO, USA



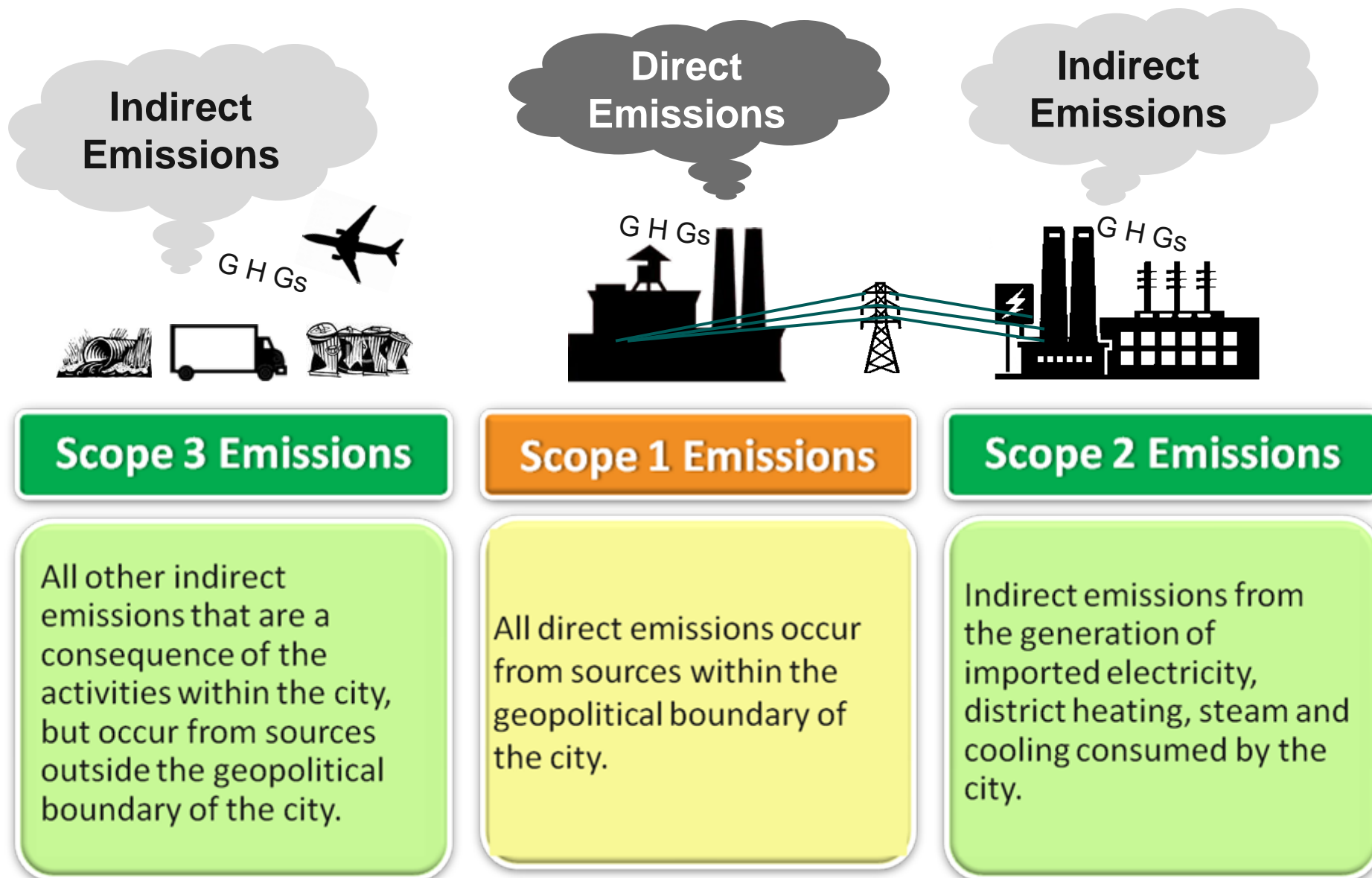
Indirect emissions:

- Cross boundary transportation
- Air travels
- Embodied emissions in materials (concrete & food)
- Wastes

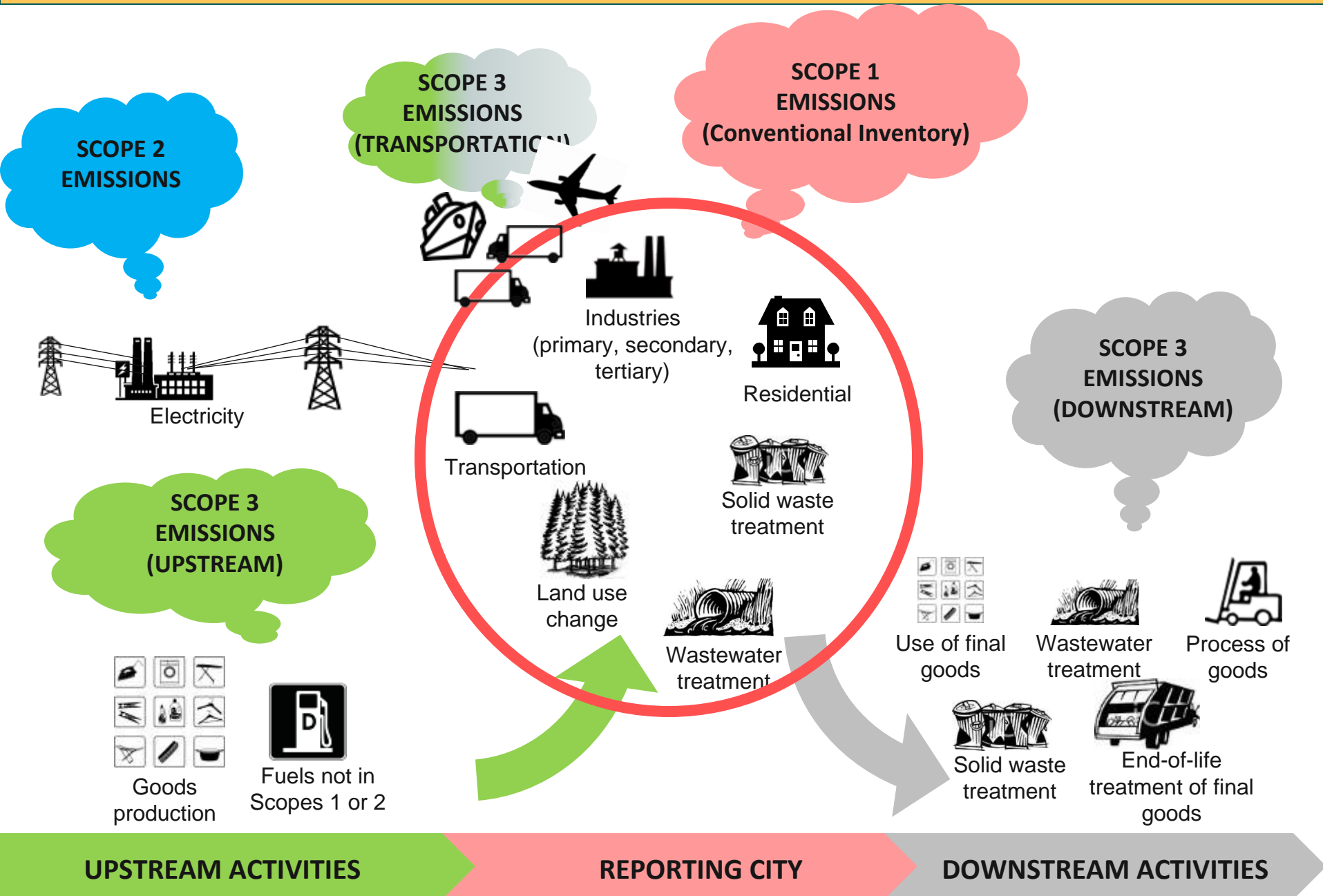
Per capita emissions

	mmtCO ₂ e
Direct energy use	19.1
Direct energy use	25.3
+ air travels	
+ embodied emissions	

Direct and indirect emissions



Example of direct and indirect emission sources





- ❑ **Global GHG reduction**
- ❑ Allow local government, businesses, and residents to assess both **direct** and **indirect** GHG emissions of their activities
- ❑ **Avoid** emission leakages
- ❑ Help government to draw **policies** and **strategies** to cut emission within and outside the city
- ❑ It **recognizes** not only the control of direct emission sources within the city, but also reduction of indirect emissions due to change of lifestyle and consumption pattern



GHG Protocol for Cities



Piloting the new GHG Protocol





Corporate Value Chain (Scope 3) Accounting and Reporting Standard

*Supplement to the GHG Protocol Corporate
Accounting and Reporting Standard*

