

Act Locally Link Globally: Translocal Collaboration through C40 Cities Climate Network



Taedong Lee, PhD

Assistant Professor

Depart. of Asian and International Studies

City University of Hong Kong

taedong.lee@cityu.edu.hk

Climate Change and Cities

Cities are emitting 70% of GHGs.

Cities are the most vulnerable places from extreme events of climate change.

Cities have own capabilities and policy measures to plan and implement climate mitigation and adaptation policy

Cities are forming translocal networks to collectively work on climate change.

Thus, Cities are places that can achieve eco-efficiency.

City and Climate Change Networks

The world: C40 Climate Leadership Group; ICLEI's CCP (Cities for Climate Protection)

Europe: Covenant of Mayors; Energy cities

US: US Mayor Climate Protection Agreement

Asia: Asian Cities Climate Change Resilience Network (Gorakhpur, Indore, Surat (India); Bandar Lampung, Semarang (Indonesia); Chiang Rai, Hat Yai (Thailand); Can Tho, Da Nang, Quy Nhon (Vietnam))

C40 Cities Climate Leadership Group

A network of Cities to tackle climate change collectively

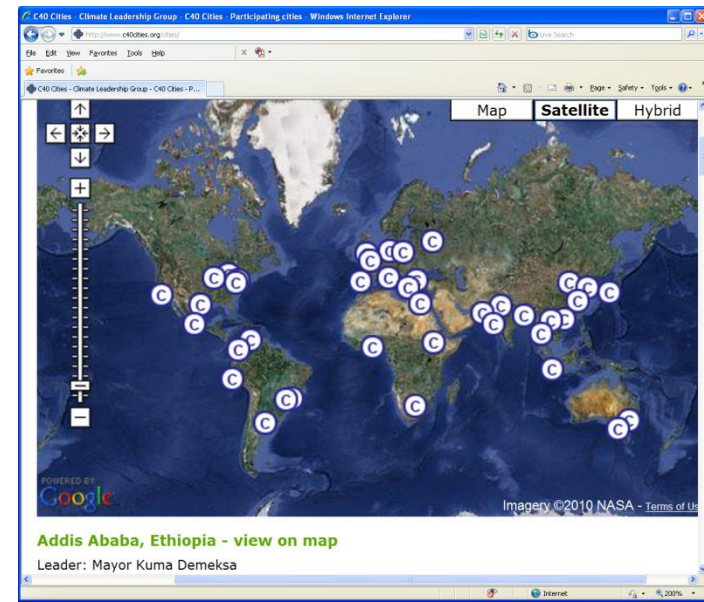
40 Cities (+19 cities around the world)

Share best practices & collaboration

Partnership with Clinton Foundation

Chaired by NY mayor Bloomberg

Ten cities of steering committee



C40 Agenda

Measuring climate change policy performance/
policies (with the ARUP and CDP (Carbon Disclosure
Project))

Information sharing (Best practices) & new
experiments

collaboration

Focused areas

- Climate Positive Development

- Energy efficiency: lighting

- Green buildings (new buildings and building retrofit)

C40: Climate Positive Development

Clinton Climate Initiative & US Green Building Council

Reduce GHG emissions and energy use

16 CPD projects (Melbourne, Seoul, Stockholm...)

Comprehensive plan and implementation

- Develop high efficiency and high performance green buildings

- Create convenient and cost effective public transit

C40: Green building

New buildings

Existing building retrofit

London- RE:FIT project

42 buildings, 7000 tons of GHG reduction annually

7 M pound spending, 1M pound saving annually

C40 roles

Sharing global best practice

Providing advice and feedback

Helping the framework's project development

C40: Energy efficiency

Aims to improve the energy efficiency of street lighting systems

C40/CCI build business case by advising on purchasing, financing, and technology

City of Boston

18,800 lights

\$2 million cost saving & 14,844 MWh annual Energy Savings

\$6.3 million cost; 3.2 years payback

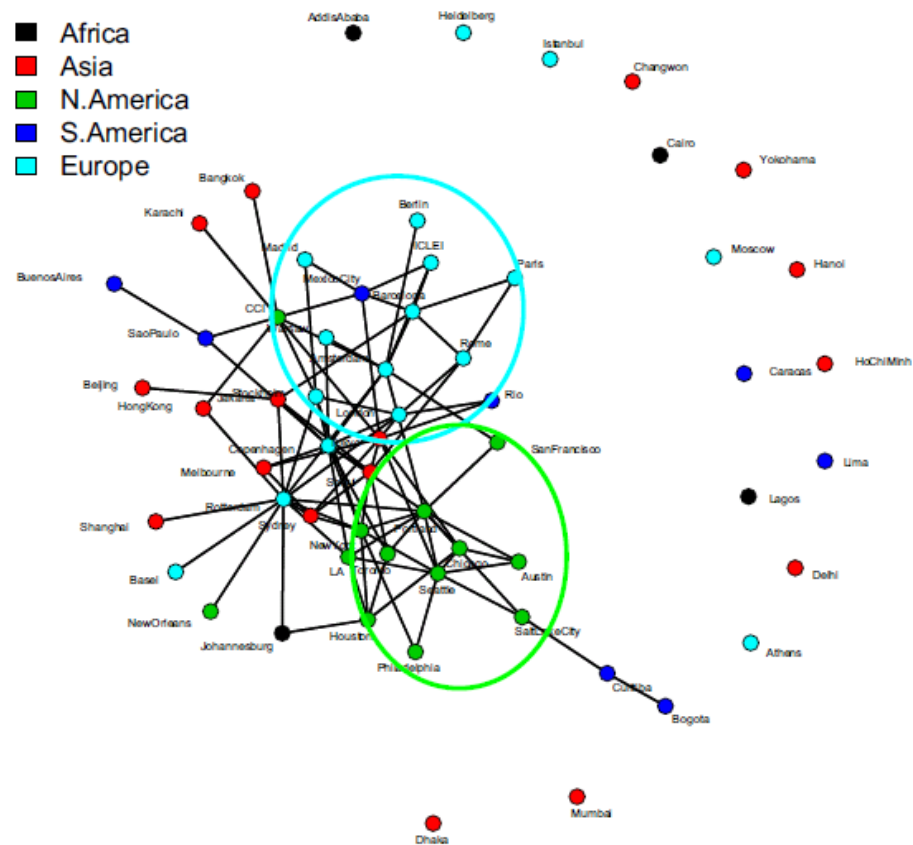
Collaboration

"process of facilitating and operating in multi-organizational arrangements for solving problems that cannot be addressed by single organizations."

Collaboration with C40 cities involves exchange of information, joint programs, sharing personnel, etc.

Social Network of C40 Collaboration

Homophily in Region



Key Findings

Collaboration ties are unevenly distributed in the network.

"Magnet Effect": Cities having higher level of policy performance are likely to form collaboration ties.

Homophily in region matters in collaboration in a translocal network.

However, homophily in collaboration mostly takes place in cities of N. America and Europe.

Implications of climate change networks for cities

Sharing ideas to tackle climate change collectively

Facilitating collaboration among cities

Consulting from expert groups (CCI, ARUP, USGBC, ICLEI)

Innovation and coalition

Connecting Delta Cities: adaption policies of Rotterdam, Jakarta, Hong Kong, New York, New Orleans, Ho Chi Minh City

Information disclosure

Asian cities' climate change network?